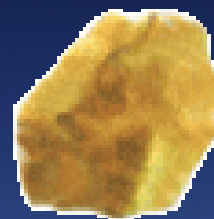


# Eligen<sup>®</sup> Technology – Mechanism of Action



Carrier molecules

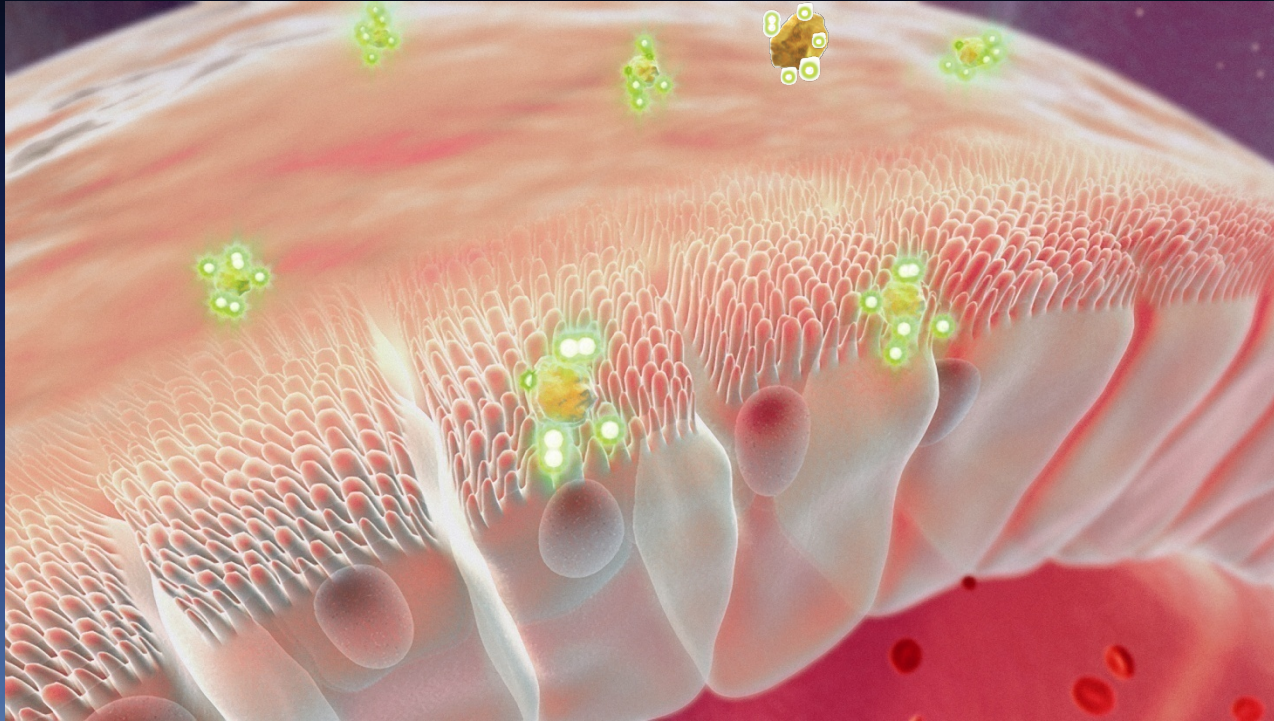
Eligen<sup>®</sup> entity



Target Delivery Compound

- **Eligen<sup>®</sup> Technology binds a Delivery Agent with a Therapeutic Compound**
  - **Does not alter the Therapeutic Compound**
  - **Occurs when both Delivery Agent and compound are in close proximity**

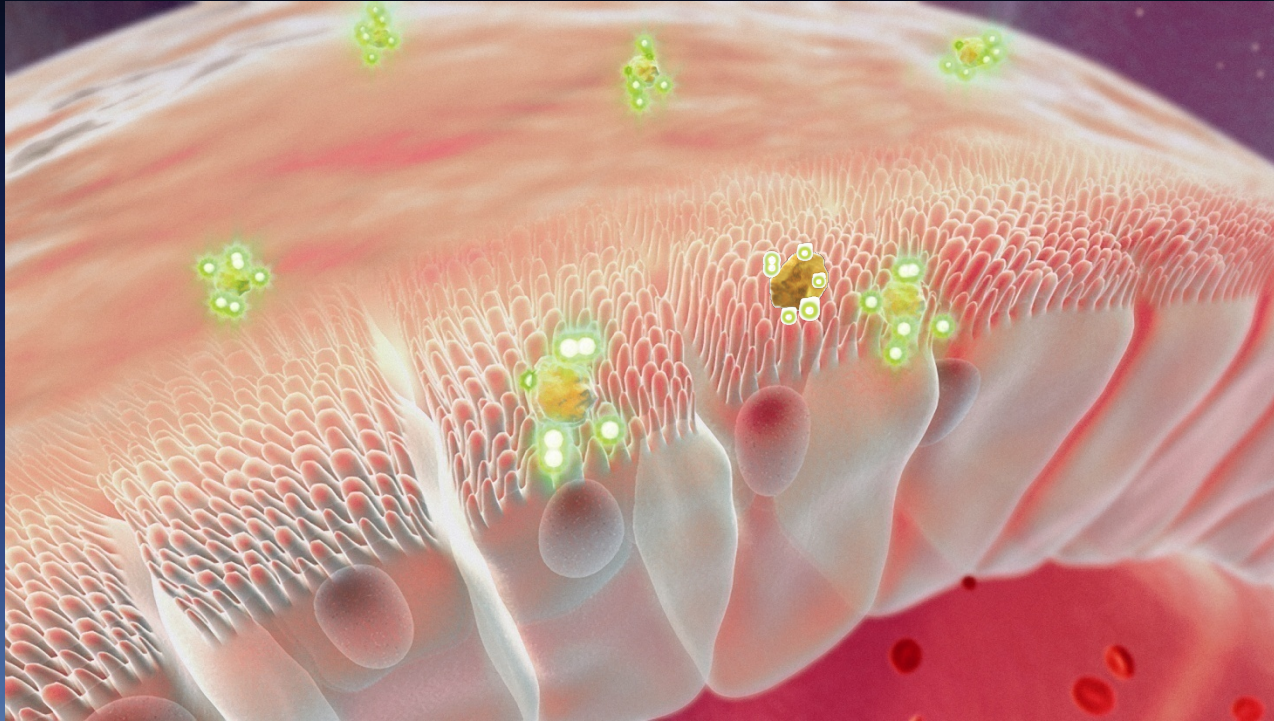
# Eligen<sup>®</sup> Technology - Mechanism of Action



- After oral ingestion, the drug-carrier combination comes in contact with stomach/intestinal membrane

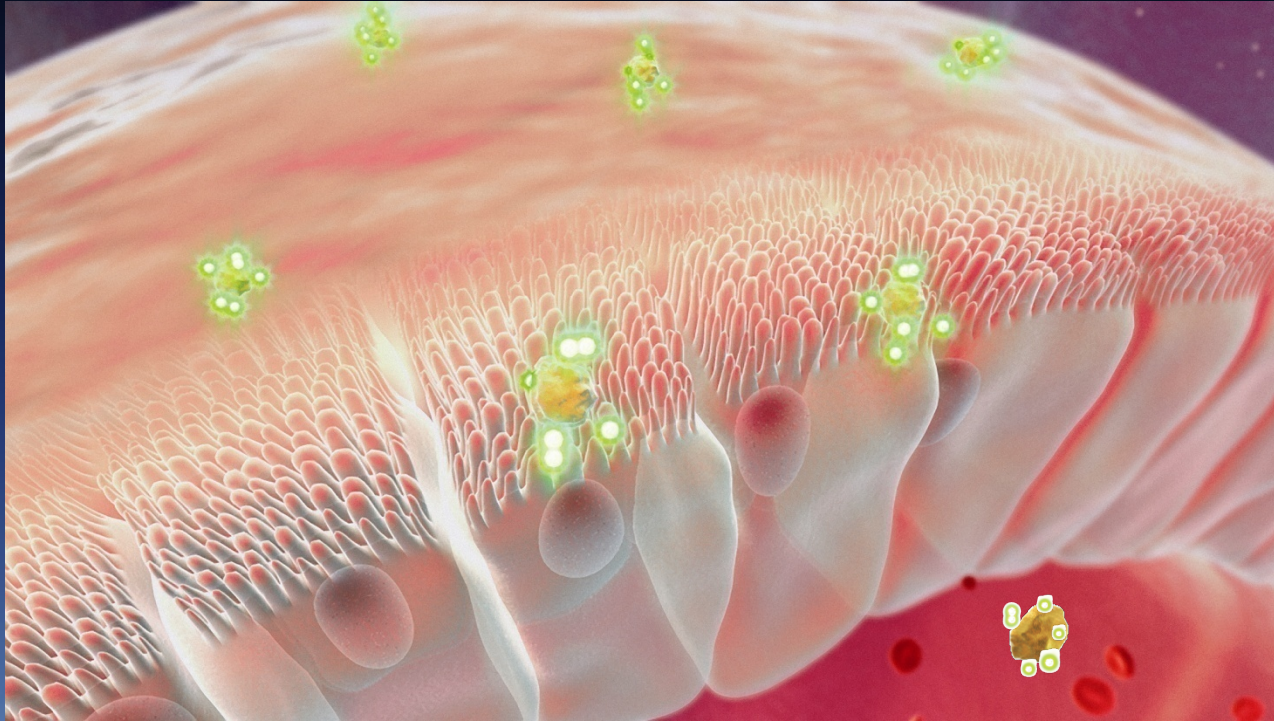


# Eligen<sup>®</sup> Technology - Mechanism of Action



- **Delivery agent chaperones compound through the gastrointestinal (GI) membrane**

# Eligen<sup>®</sup> Technology - Mechanism of Action



- Delivery agent separation from the compound is allowed by weak intermolecular forces
- Compound free to exert its pharmacological effect